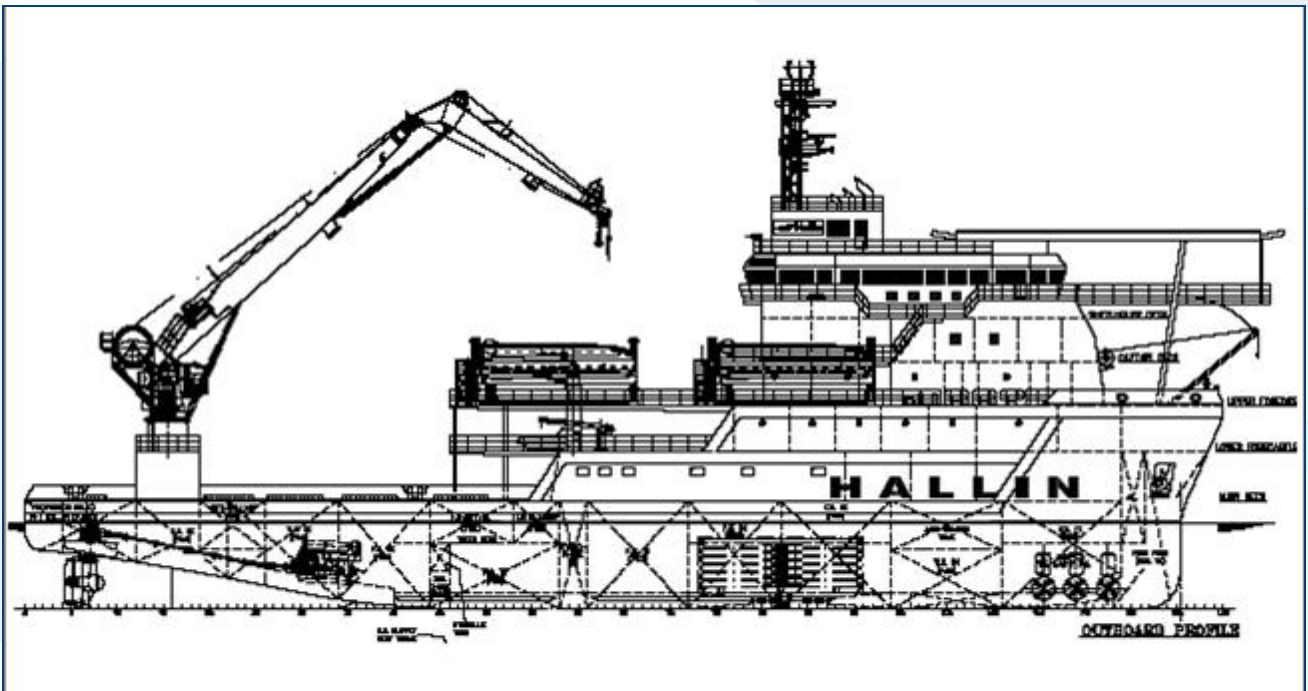


DP 2 Subsea Operations Vessel Ullswater



Hallin Marine are the operators of DP2 SOV Ullswater on a long term charter. Ullswater is ideal for Wellhead Servicing, Inspection & Construction Diving and ROV Support.

DP 2 Subsea Operations Vessel

The Ullswater will be equipped with Hallin Marine State-of-the-art 15 Man System / 3 Man Bell Saturation Diving System, HMS-SAT-07 and Air Diving System. ROV systems can be installed as required.

PRINCIPAL PARTICULARS

Built Singapore 2008	
Class	ABS
Notation	ABS A1 AMS Offshore Support Vessel (E) DPS-2
Flag	Marshall Islands
Port of Registry	Majuro
IMO / Call sign	9395800 / V7PV6
Length Overall	78.00 m
Length Waterline	73.00 m
Depth Moulded	7.00 m
Breadth Moulded	20.40 m
Draft Designed	5.50 m
GRT / NRT	4469T / 1340T

PERFORMANCE

Maximum Speed	12 knots
Economical Speed	10 knots
Type of fuel Marine	Gas Oil
Fuel Consumption	16 mt/24 hours @ econ speed
DP2 Usage	7 – 10 m ³ /24 hrs, fair weather

DECK EQUIPMENT

Deck Crane (1)	1 x 50T SWL @ 15m Offshore Subsea Crane
Deck Crane (2)	1 x 5T SWL @ 15m
Deck Crane (3)	1 x 3T Palfinger
Anchors	3 x AC-14 anchors 2655kg
Chain Cable	2 x chain cable; U2 53mm
Anchor Windlass	1 x electro-hydraulic
Capstan	2 x 10 mt @ 14 m/min electro-hydraulic;
Helideck	CAP437 for Sikorsky S61N / Super Puma

PROPULSION SYSTEM & PUMPS

Main Engines	2 x Caterpillar 3606 DITA; 2760 BHP each
Main Generator	3 x Caterpillar 3412C & Leroy Somer; 590ekW x 440/3/60 each
Shaft Generator	2 x 1600kW x 440/3/60 each
Emergency Generator	1 x CAT 3412C Radiator cooled & Leroy Somer 550ekW x 440/3/60
Bow Thrusters	3 x Wartsila LIPS CT-175 (CCP) 600kW each
Propellers	2 x Wartsila CS 250-S; 1920kW each

CARGO CAPACITIES & PUMPS

Deadweight	2737T at 5.5m draft
Deck Cargo	1000T on aft deck
Deck Strength	5 tons/m ² uniform loading
Clear Deck Area	700m ²
Fuel Oil	845 m ³ Potable Water 1241 m ³
Ballast / Drill Water	2095 m ³ Lub Oil 2 x 8 m ³
Oily Water	2 x 17 m ³ Sewage Holding 32 m ³
Freezer / Chiller	50 m ³ @ -20 °c / 50 m ³ @ +4 °c
Fuel Oil	1 x 100 m ³ /hr @ 70 m head
Fresh Water	1 x 100 m ³ /hr @ 70 m head
SWB / Drill Water	1 x 100 m ³ /hr @ 70 m head

ACCOMMODATION

8 X 1 berth cabins
8 x 2 berth cabins
24 x 4 berth cabins
Total Cabin Berths = 120
Hospital with 2 berths
Fully Air Conditioning

OTHER FACILITIES

Mess Room with Seating for approx 70
Survey Room with access to Fwd & Aft Bridge
Conference Room
2 x Offices (Ships Office & Client Office)
1 x Gymnasium ; 1 x Ops Room
Dedicated Diving and Deck Workshops & Stores c/w tools and machinery

SATURATION DIVING SYSTEM

15 Man Diving System
3 Man Diving Bell (Through Moonpool Launch)
Self Propelled Hyperbaric Lifeboat
Below Decks HeO₂ Storage (15000 m³ x 205 bar)
Deck O₂ Storage (Purpose Built)
Diver Gas Reclaim System
Chamber Gas Reclaim System
Air Diving System & ROV – optional installed as required

DP2 DYNAMIC POSITIONING SYSTEM

ABS Class DPS-2 DP System (Fully Redundant)
2 Independent DGPS Veripos
Sonardyne Acoustic System; Fusion USBL Converteam Standard
Taut Wire System (500m depth)
Fan Beam Laser reference (Plug & Play option)
2 x Anemometers; 2 x Motions Sensors
Independent Joystick System

RADIO & NAVIGATION EQUIPMENT

GMDSS	2 x Furuno RC-1800T (Area 3)
SSB	1 x Furuno FS-5000
Inmarsat	C 2 x Furuno Felcom 15
VHF Radio	1 x Furuno Fm 8800S
Navtex Receiver	1 x Furuno NX 700B
SART	2 x McMurdo S4 (9GHz)
EPIRB	1 x McMurdo E5
Portable VHF Radios	3 x McMurdo R2
Radar	1 x Furuno FR 2127; 1 x Furuno FR 2117
Echo Sounder	1 x Furuno FE 700
GPS	1 x Furuno GP 90
Gyrocompass	3 x SG Brown Meridian
Autopilot	1 x Anschuetz Pilotstar D
Magnetic Compass	1 x Cassens & Plath Reflecta 1
Weather Fox	1 x Furuno FAX 207
Speed Log	1 x Furuno DS-80
AIS	1 x Furuno FA-150

FIRE-FIGHTING EQUIPMENT & ANTI-POLLUTION EQUIPMENT

INTERNAL	
Full flooding CO2 system in engine room	
MISCELLANEOUS	
Search Lights	3 x 2,000 W TBC
Floodlights	5 x 1,000 W & 2 x 500W Aqua Signal
Lifeboat	2 x 75 men SOLAS Approved Type
Liferafts	10 x 25 men SOLAS Approved Type
Rescue Boat	1 x Diesel driven inboard water jet. SOLAS Approved Type motor
Water Maker	2 x 30 m ³ /day reverse osmosis
Sewage Treatment Plant	1 x 120 men/day

Hallin Marine

Unit 12 Wellheads Place Wellheads Industrial Estate Dyce Aberdeen AB21 7GB

Tel:+44 1224 729944

Fax:+44 1224 729071

Email:info@hallinmarine.co.uk